

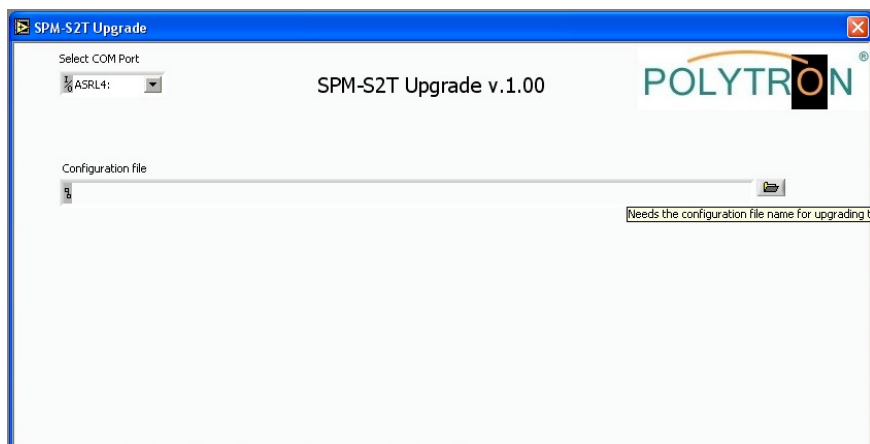
Software Update SPM-S2T/S2C

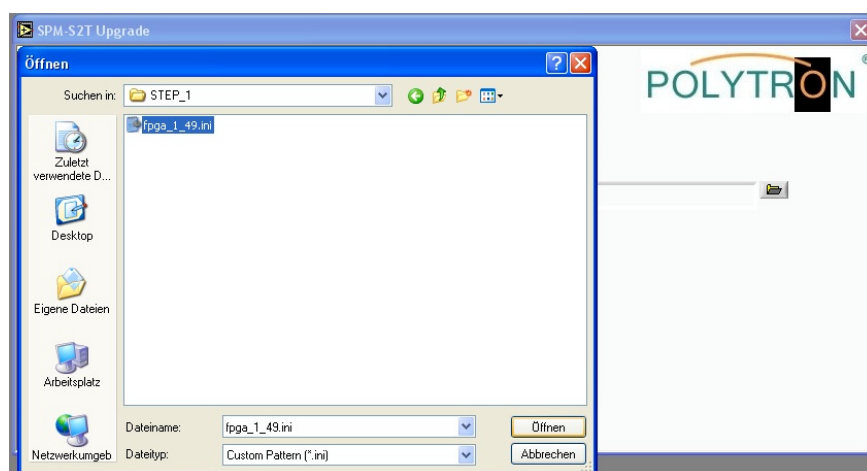
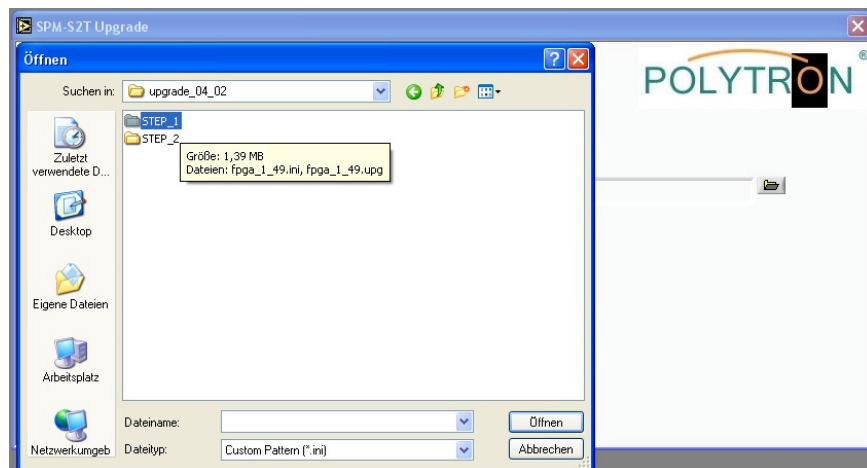
Required Tools: PC with one free USB-Port
USB-Cable Type A to B
Update Tool „SPM-S2T_Upgrade_Setup.exe“
Firmware ZIP-File e.g. „SPM-S2T_0402.zip“

1. Install the update tool by double-clicking on file „SPM-S2T_Upgrade_Setup.exe“
Follow the installation instructions displayed on the screen.
After installation a new entry „SPM-S2T_Upgrade“ will be found in the windows start menu.
2. Connect the SPM-S2T Module to the PC using a USB A-B Cable.
The module will be recognized by the PC as a virtual COM-Port.
3. Unzip the ZIP-File containing the Firmware files e.g. „SPM-S2T_0402.zip“.
The unzipped file will contain two folders called STEP1 and STEP2.
The firmware file in folder STEP1 is used to update the FPGA Firmware.
The firmware file in folder STEP2 is used to update the MPEG Decoder Firmware.
4. Click on the new entry „SPM-S2T_Upgrade“ to start the update tool.
5. Select the COM-Port connected to the SPM-S2T module.

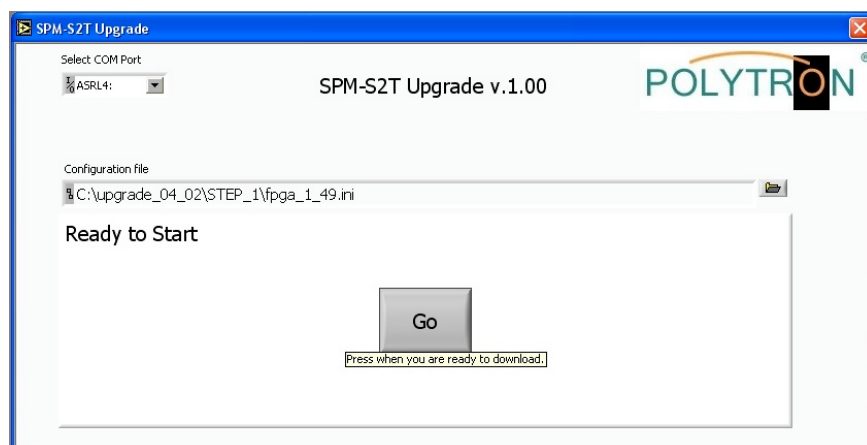


6. Select the firmware file in folder STEP1.

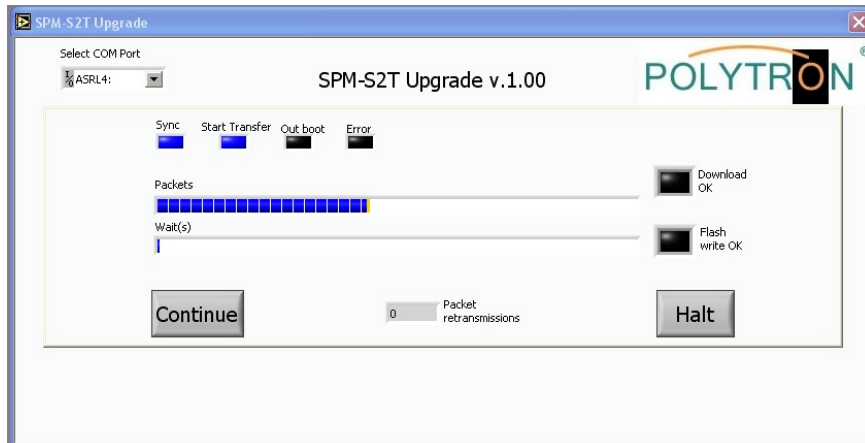




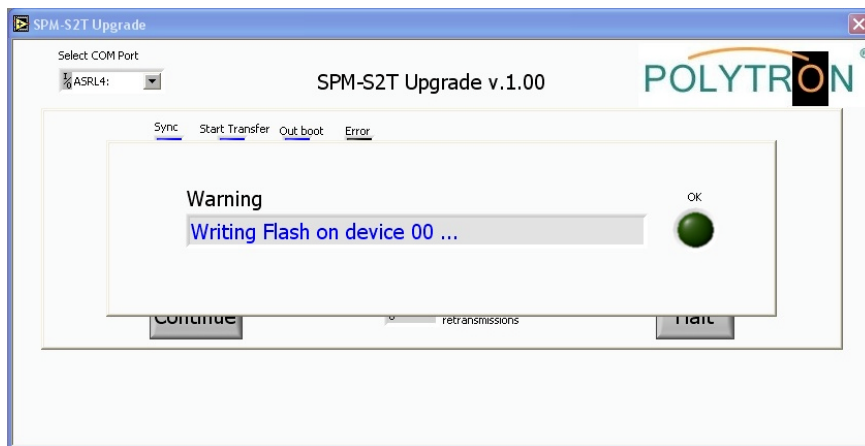
7. Start the Update by pressing the GO-Button



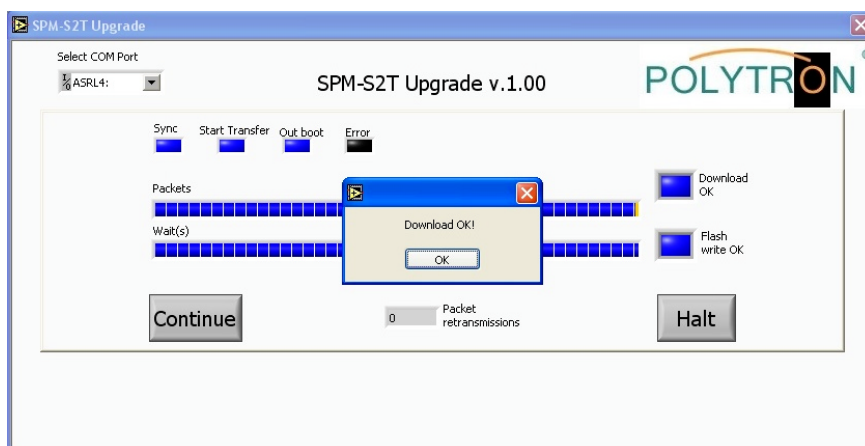
The update progress is shown on the dialog



After the firmware file is completely transferred to the module it is stored to the internal flash. This is also shown on the dialog.



Once the firmware is stored to the internal flash a „Download OK“ message is shown.



Press the OK-Button and then press the HALT-Button to go back to the initial dialog.

8. Repeat Steps 6 and 7 using the firmware file located in folder STEP2.

Please note: Never interrupt the update procedure by closing the update tool or disconnecting the USB-Cable or power supply. Updating both firmware files can take up to 15min.