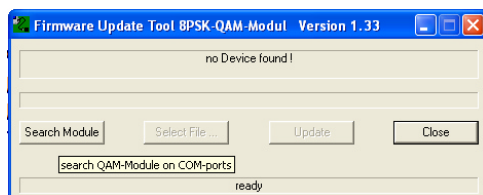


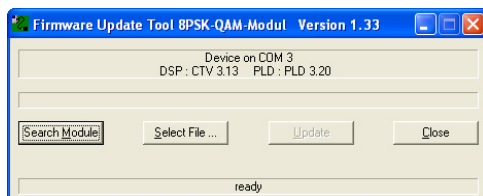
Software Update SPM-S2CT / SPM-T2CT

Required Tools: PC with one free USB-Port
USB-Cable Type A to Mini-B
Update Tool "Update_S(T)2CT_Vxxx.exe" (included in "SPM-S(T)2CT_Vx.xx.zip")
Firmware-File e.g. "SPM-S(T)2CT_Vxxx.qam" (included in SPM-(T)2CT_Vx.xx.zip")

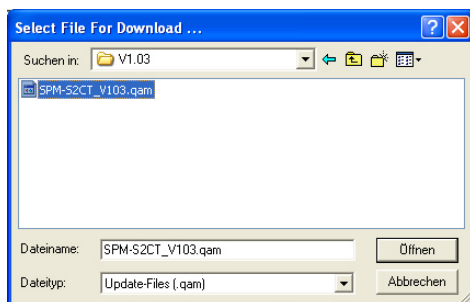
1. Unzip "SPM-S(T)2CT_Vxxx.zip" to any directory.
2. Connect the SPM-S2CT or SPM-T2CT Module to the PC using a USB A - Mini-B Cable.
The module will be recognized by the PC as a virtual COM-Port.
3. Run Update Tool "Update_S(T)2CT.exe" The following window is displayed.
If the module is not automatically detected press the "Search Module" Button.



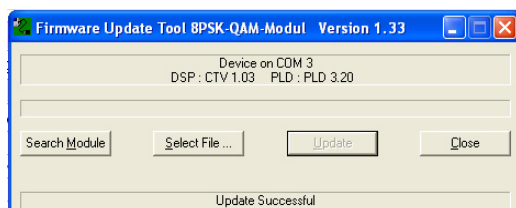
If a module is detected the window shows information as follows:



4. Press the "Select File" Button and choose the Firmware File from the location where you unzipped the file in step1.



5. Press the "Update" Button. The new firmware will be uploaded and the module restarted. This may take a while. If the update was successful the message "Update successful" is displayed.



Please note: Never interrupt the update procedure by closing the update tool or disconnecting the USB-Cable or power supply.