



**AT5000 EDFA
Erbium-Doped
Fiber Amplifier**

**Quick Reference
Guide**

Revision D

ACT AT5000 Erbium-Doped Fiber Amplifier

Quick Reference Guide

ACT Document Number: ACT AT5000 32 Port EDFA Quick Reference Guide

User Guide Revision D

Copyright © 2017 Ascent Communication Technology Limited.

All rights reserved. Reproduction in any manner whatsoever without the express written permission of Ascent Communication Technology is strictly forbidden.

This document is produced to assist professional and properly trained personnel with installation and maintenance issues for the product. The capabilities, system requirements and/or compatibility with third-party products described herein are subject to change without notice.

For more information, contact ACT: support@ascentcomtec.com



Revision History

Revision	Date	Reason for Change
A	08/22/2016	Initial release
B	10/11/2016	Added warnings
C	01/28/2017	Updated pictures
D	01/30/2017	Updated GUI section

Table of Contents

1 Precautions	4
2 Introduction	5
2.1 Overview	5
2.2 Features.....	5
2.3 Application Diagram.....	6
2.4 Specifications	6
2.5 Diagram	6
3 Installation.....	7
3.1 Equipment Inventory	7
3.2 Packaging and Transportation.....	7
3.3 Power and Cooling Requirements.....	7
3.4 Module Installation and Adjustment	8
3.5 Front Panel Layout	8
3.6 Rear Panel Layout.....	9
4 Technical Description	9
4.1 Optical Gain Block	9
4.2 Alarm System	10
4.3 Cooling System	10
5 Software Description – Operation	10
5.1 LCD menu Sequence and operation.....	10
5.2 WEB Management Interface (Web GUI).....	12
6 Troubleshooting	20
6.1 Fiber Optic Maintenance	21
6.2 Troubleshooting Conditions.....	21

1 Precautions



Warning

Exposure to class 1M laser radiation is possible. Access should be restricted to trained personnel only. Do not view exposed fiber or connector ends when handling optical equipment.



- Ensure adequate cooling and ventilation as specified.
- The installation and operation manual should be read and understood before units are put into use.
- **Always replace protective caps on optical connectors when not in use.**
- The typical connectors fitted are SC/APC 8°. **Note:** 8° angle polished connectors must be used.

Cleaning

Use only a damp cloth for cleaning the front panel. Use a soft dry cloth to clean the top of the unit.

Do not use spray cleaner of any kind.

Overloading

Overloading wall outlets and extension cords can result in a risk of fire or electric shock.

Use approved electrical cords.

Damage requiring service

Unplug unit and refer servicing only to Ascent Communication Technology qualified service personnel.

Servicing

Do not attempt to service this unit yourself. Refer all servicing only to Ascent Communication Technology qualified service personnel.

General Reminders and Warnings

Review these reminders and warnings before you inspect and clean your fiber-optic connections.

Important reminders



- **Always turn off any laser sources before you inspect fiber connectors, optical components, or bulkheads.**
- Always make sure that the cable is disconnected at both ends and that the card or pluggable receiver is removed from the chassis.
- **Always wear the appropriate safety glasses when required in your area. Be sure that any laser safety glasses meet federal and state regulations and are matched to the lasers used within your environment.**
- Always inspect the connectors or adapters before you clean.
- Always inspect and clean the connectors before you make a connection.
- Always use the connector housing to plug or unplug a fiber.
- **Always keep a protective cap on unplugged fiber connectors.**

- Always store unused protective caps in a resealable container in order to prevent the possibility of the transfer of dust to the fiber. Locate the containers near the connectors for easy access.
- Always discard used tissues and swabs properly.

Warnings



- Never use alcohol or wet cleaning without a way to ensure that it does not leave residue on the endface. It can cause damage to the equipment.
- **Never look into a fiber while the system lasers are on.**
- Never clean bulkheads or receptacle devices without a way to inspect them.
- Never touch products without being properly grounded.
- **Never use unfiltered handheld magnifiers or focusing optics to inspect fiber connectors.**
- **Never connect a fiber to a fiberscope while the system lasers are on.**
- Never touch the end face of the fiber connectors.
- Never twist or pull forcefully on the fiber cable.
- Never reuse any tissue, swab, or cleaning cassette reel.
- Never touch the clean area of a tissue, swab, or cleaning fabric.
- Never touch any portion of a tissue or swab where alcohol was applied.
- Never touch the dispensing tip of an alcohol bottle.
- Never use alcohol around an open flame or spark; alcohol is very flammable.

2 Introduction

2.1 Overview

AT5000 1RU or 2RU Erbium-Doped Fiber Amplifier (EDFA) offers a flexible and scalable optical amplification for high quality video transmission in CATV networks. Together with ACT 1RU 1550nm transmitter, the AT5000 EDFA provides an ideal video overlay solution in high density FTTX networks to bring the video services to business and home premises.

AT5000 EDFA series simplifies the application by offering low noise, high output power, and intuitive front panel LCD display to make operator's life easier. The optical amplifier is packaged in a self-contained 19" sub-rack of 1 or 2 RU with universal mains power supply and SNMP management.

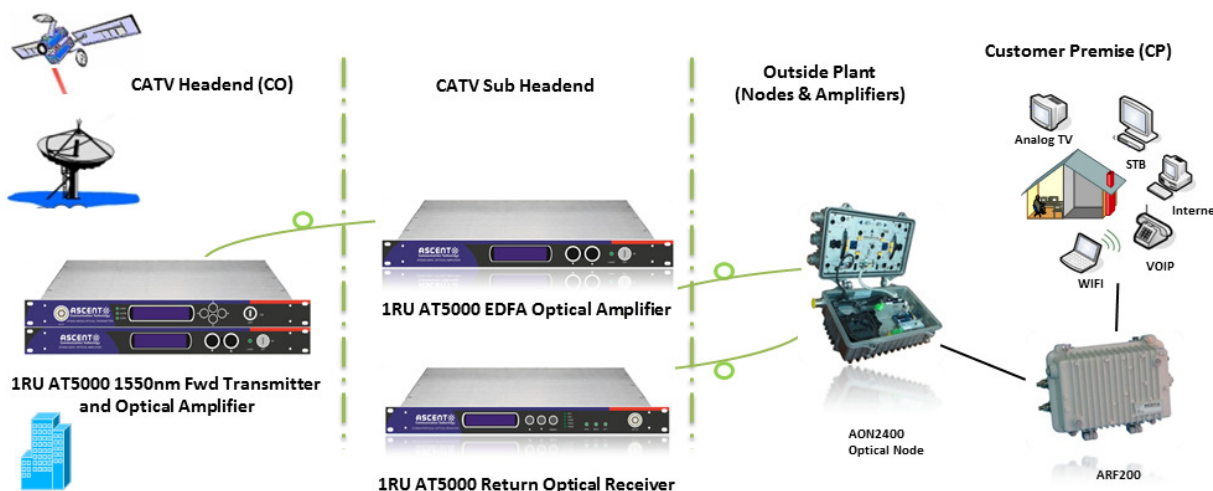
The optical output power level can be ordered from 13 dBm to 26dBm with variable output features from 20dBm up. Multiport EDFAs accommodates up to 16 output ports in 1RU setting and 32, 64 output ports in 2RU setting. Combined with our AT5000 1550nm direct or externally modulated laser transmitter, MSOs can quickly deploy and activate advanced multi-media services in long distance video transmission and high subscriber count FTTH networks.

2.2 Features

- Low noise, high performance
- Suitable for analog and digital CATV systems, DOCSIS, FTTH and more applications
- Suitable for 1550 nm DWDM applications for multiple wavelengths on single fibre
- Nominal output powers from 13dBm to 26dBm per port

- Adjustable output power
- Extend analog and digital CATV to suit long distance feeders or larger FTTH distribution systems
- Local or remote monitoring and configuration
- SNMP/HTTP monitoring, remote network management and control support

2.3 Application Diagram



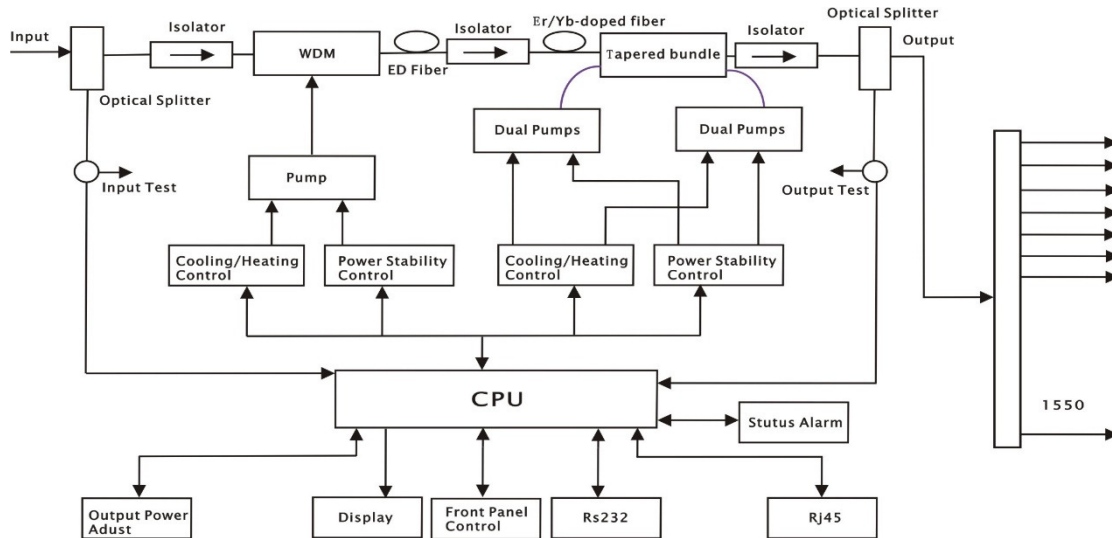
2.4 Specifications

AT5000 EDFA Erbium-Doped Fiber Amplifier - 19" 1RU

Item	Description
Total Output (dBm)	31 32 33 34 35 36 37 38 39 40
Total Output (mW)	1250 1600 2000 2500 3200 4000 5000 6400 8000 10000
Input Power	-8 dBm to +10 dBm
Range of Output Adjustment	-3dBm
Wavelength	1530 nm to 1565 nm
Output Stability	<±0.3 dB
Optical Return Loss	≥45 dB
Fiber Connector	FC/APC, SC/APC
Noise Figure	<6.0 dB (input 0 dBm)
Web Port	RJ45 (SNMP)
Power Consumption	≤80 W
Voltage	AC: 220 V (90 V to 265 V) DC: -48 V
Operating Temperature	0 °C to +55 °C
Dimensions (L × W × H)	370 mm × 486 mm × 44 mm
Net Weight	6.0 kg

2.5 Diagram

Single input, standard model



3 Installation

3.1 Equipment Inventory

On receiving your new EDFA, you should carefully unpack and examine the contents for loss or damage that may have occurred during shipping. Refer to warranty registration if loss or damage has occurred. The EDFA pack will consist of the following:

Qty	Description
1	EDFA, Erbium Doped Fiber Amplifier
1	Product user manual (includes individual test sheet)
1	Key for switching laser ON / OFF
1	Power supply cord

3.2 Packaging and Transportation

Keep all packing boxes and packaging of the EDFA for future transport.

Use only the original packaging of the EDFA when transporting. This packaging has been specifically designed to protect the equipment.

3.3 Power and Cooling Requirements

The EDFA requires an input of 90 to 264 Vac at 50/60 Hz. The mains input socket on the unit is IEC configuration. Over-load and over-voltage protection is included in the unit, which may cause it to shut down in extreme circumstances. If this occurs, remove the fault condition and the system will recover automatically.

The unit should be located in an environment not exceeding a temperature range from 0 °C to +50 °C. The internal temperature should never reach +70 °C. If the temperature exceeds the above limits, the unit should be relocated in the equipment rack where the ambient temperature will be less than +50 °C.

Horizontal, fan-forced airflow permits the mounting of multiple laser transmitters without the need for a 1 RU rack space clearance between other devices, thus maximising rack

space at the headend location. Ensure adequate space behind the unit for ventilation as air flow is through the back of the unit.

3.4 Module Installation and Adjustment

The following steps explain how the EDFA is to be installed. Please read them carefully:

Unpack the optical amplifier and inspect the unit as stated in **Section 3.1**.

Locate the optical amplifier in a 19" cabinet, ensuring adequate ventilation and space for accessing the rear ports and front-panel keypad.

Prior to connecting any fiber patch leads to optical transmission equipment, always ensure that the ends of the fiber optic connectors are clean and free of contaminants.



Warning Do not view exposed fibers or connector ends when handling optical equipment. Exposure to invisible laser radiation may cause permanent eye damage.

Connect the optical output ports to the system.

Always place protective dust caps on all optical ports when not in use.

Connect the optical input signal to the input port of the EDFA.

Ensure the input optical power is within the range of -10 to +10dBm with the typical value at +3dBm.

Before connecting AC power to the unit, make sure that the LASER ON/OFF key is switched OFF (front panel).

Use the supplied power cord to apply mains power to the transmitter.

Switch the AC power ON (switch located on the rear panel).

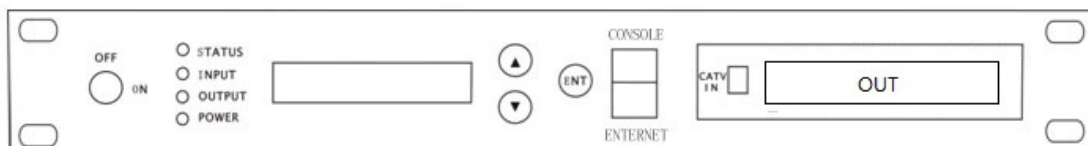
Switch on the laser using the key switch.

Front panel shows "KEY ON..." Laser status lamp turns green from red, and the machine enters self-checking. After checking, it enters working status and display "**Descriptor**".

If the laser is not on, you will have to activate the laser and check that the output power is as specified in the EDFA Certificate of Performance (COP). To activate the laser, set **CONTROL1**, see **Section 5.2**.

See **Section 5** for instructions on how to view the status information about the EDFA.

3.5 Front Panel Layout



LED display

Displays the working parameter of the machine

STATUS Indication light

Green: Normal Condition

Red: No input or abnormal condition

INPUT Indication Light

Green: Normal

OUTPUT Indication Light

Green: Normal

Power Indication Light

Green: Power Connected

Key

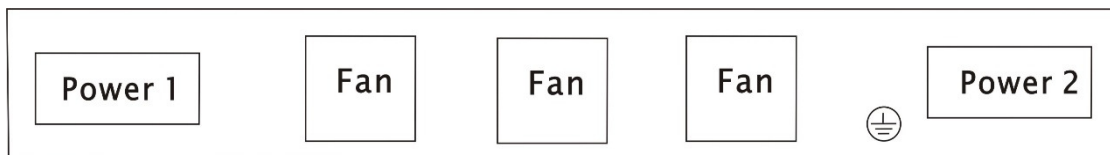
ON: Turn on the laser

OFF: Turn off the laser

RF Test

Output level 70 dB μ V

3.6 Rear Panel Layout



Power Switch (220 V)

ON: Turn on the power

OFF: Turn off the power

Power Socket

AC 220 V or DC -48 V

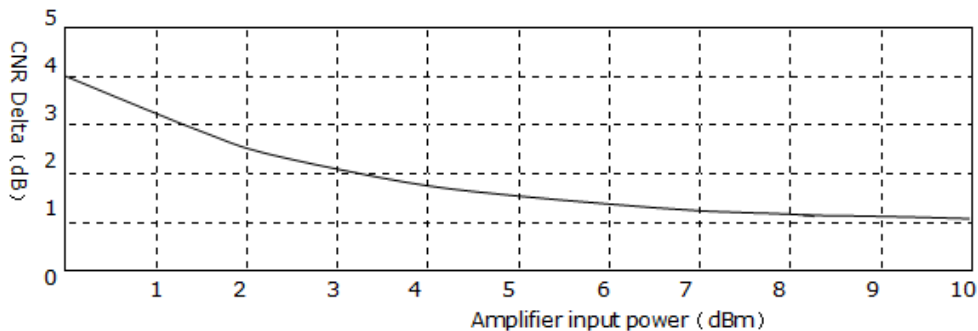
4 Technical Description

4.1 Optical Gain Block

The Optical Gain Block has an input optical signal range of -10 to +10 dBm for which the output will be stable at its nominated optical power. Although the pump lasers will operate with input optical signals down to -10dBm, optimum specifications will be met above 0dBm.

The optical gain will be determined by the required optical output power minus the optical input power. The higher the gain the higher the noise figure (typically ≤ 5.0 dB).

The Optical Gain Block is driven by the Control Board which also performs the shutdown function of the lasers. The optical connectors available are SC/APC, E2000/APC and FC/APC.



4.2 Alarm System

The EDFA alarm system is designed to generate only urgent alarms. This is due to the importance of the EDFA, as this module will usually drive a large portion of the optical distribution network. Working status indication (LED) is next to the power switch in the front panel. When it is green, the device is working properly; when it is red, the laser does not work; when it is red flashing, there is an alarm. The urgent alarm communicates to the control module and makes the LCD flash when displaying STATUS.

1. With 220 V power supply, if the unit is good, the digital panel will display "READY: KEY OFF" and there is Red light.
2. Turn on with the switch key, the digital panel will display "KEY ON". After a few seconds, the laser is turned on automatically and the indication light turns into Green from Red.
3. Pressing ▲\▼ bottom to display parameters.
4. If any fault listed above occurred, there will be an alarm (Red flashing), Microprocessor will shut off the laser pump automatically, and digital panel will show the fault message.
5. In order to protect the laser, the power supply of the laser has time-delay function. After turning on with the key, the laser will start to work after 10 seconds.

4.3 Cooling System

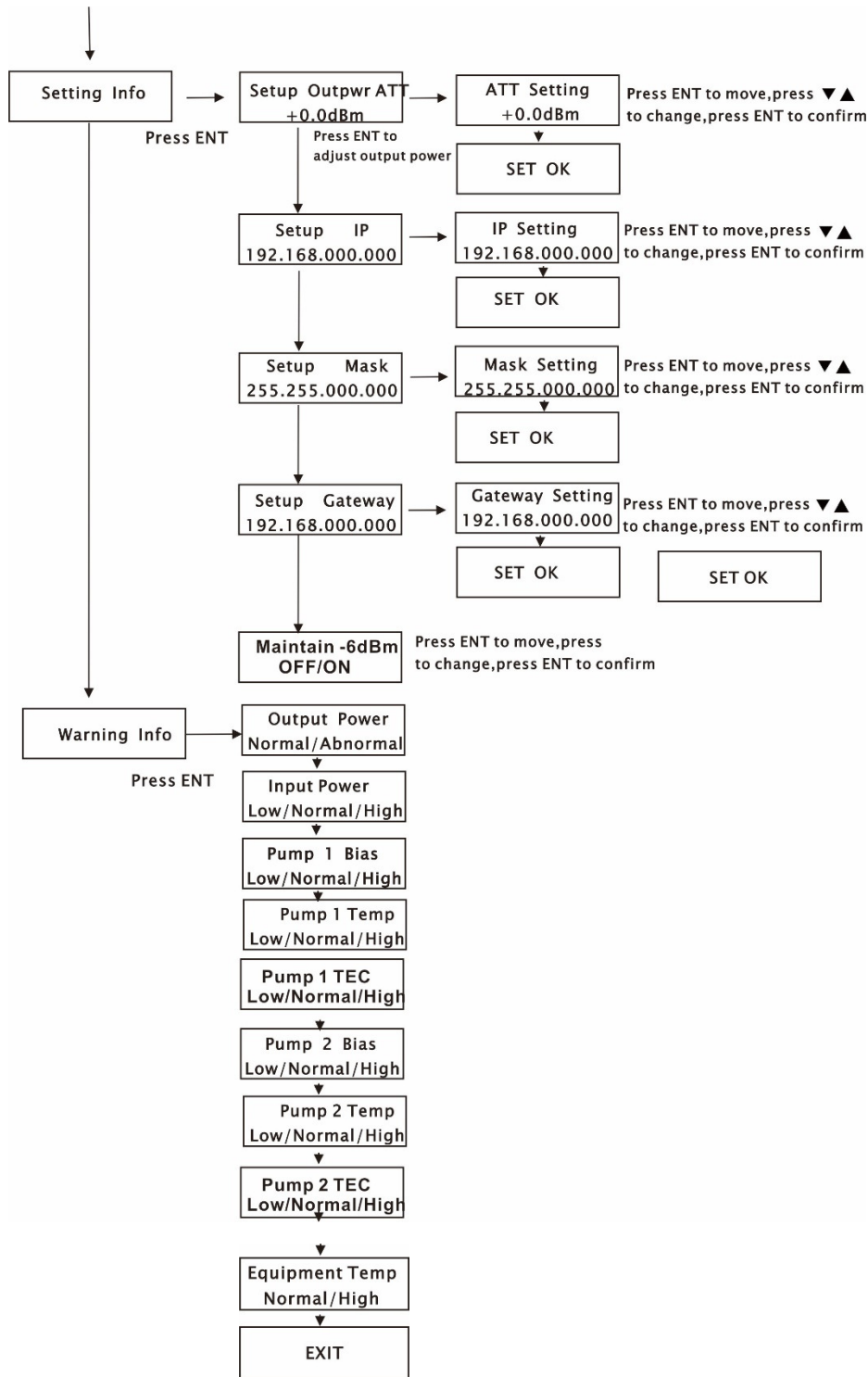
The EDFA is cooled by 3 fans. The fans will activate when the amplifier is turned on to prevent the device from overheating.

5 Software Description – Operation

5.1 LCD menu Sequence and operation

LCD Menu Sequence

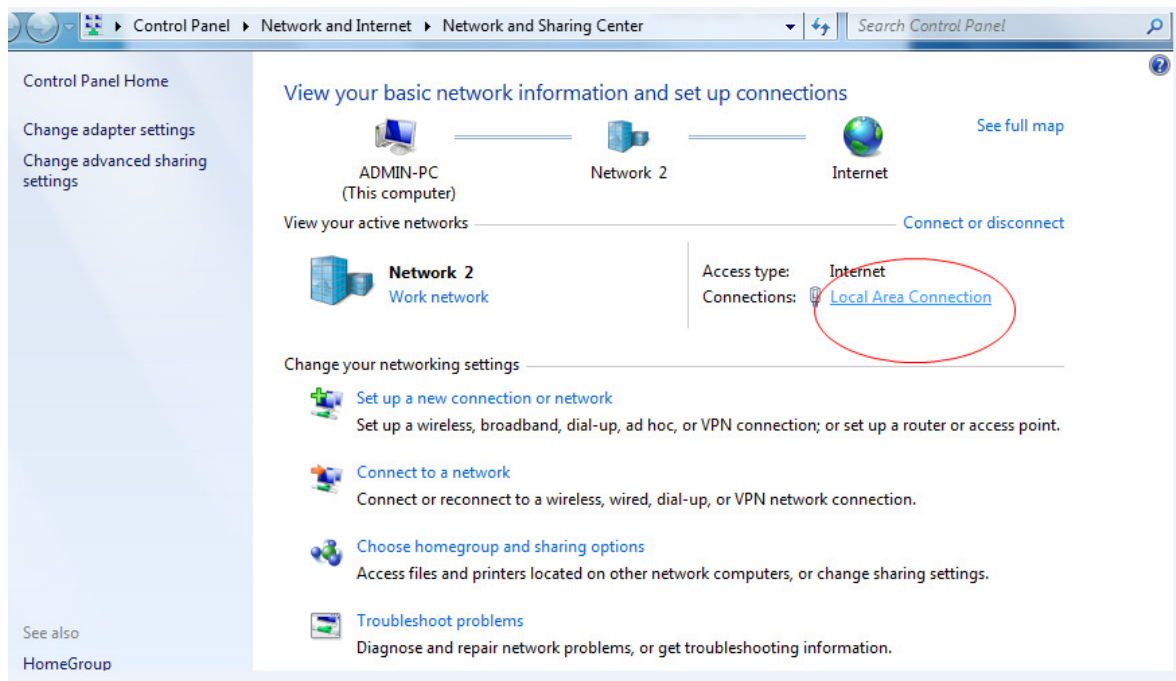
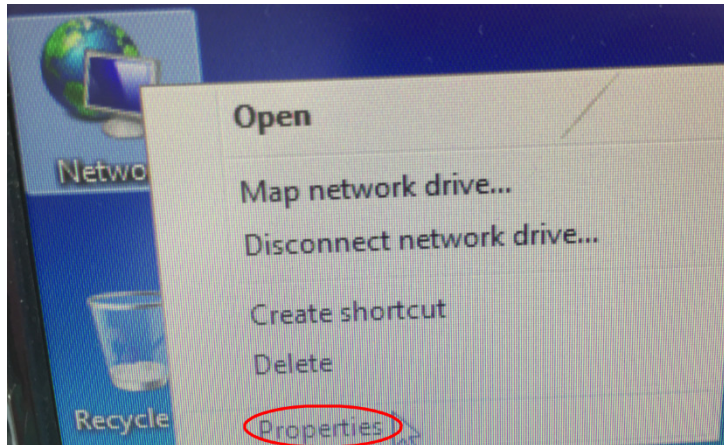
Press ▲ for forward, press ▼ to return.

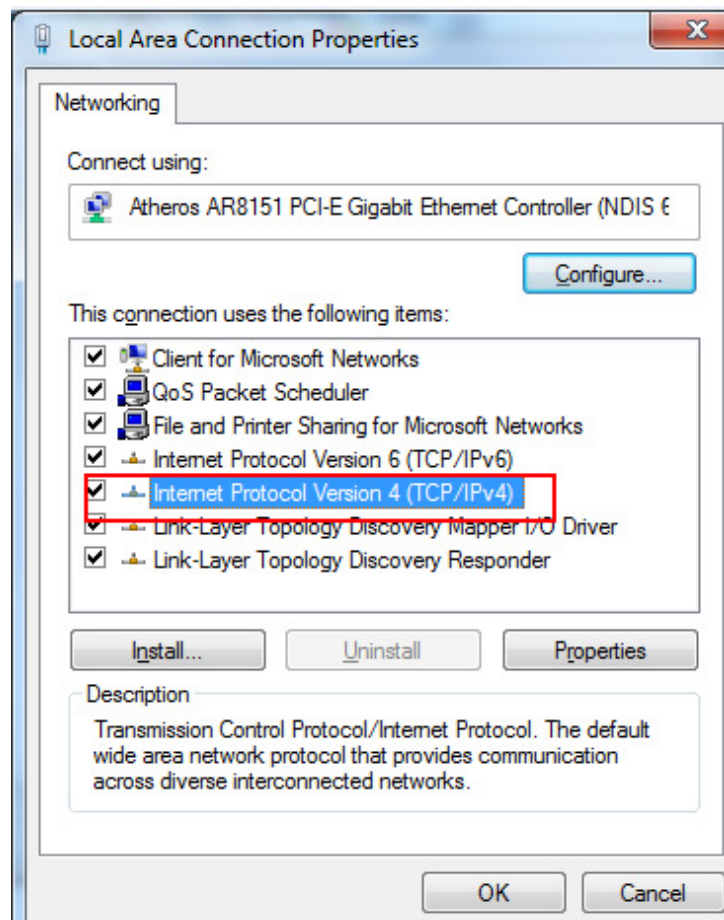
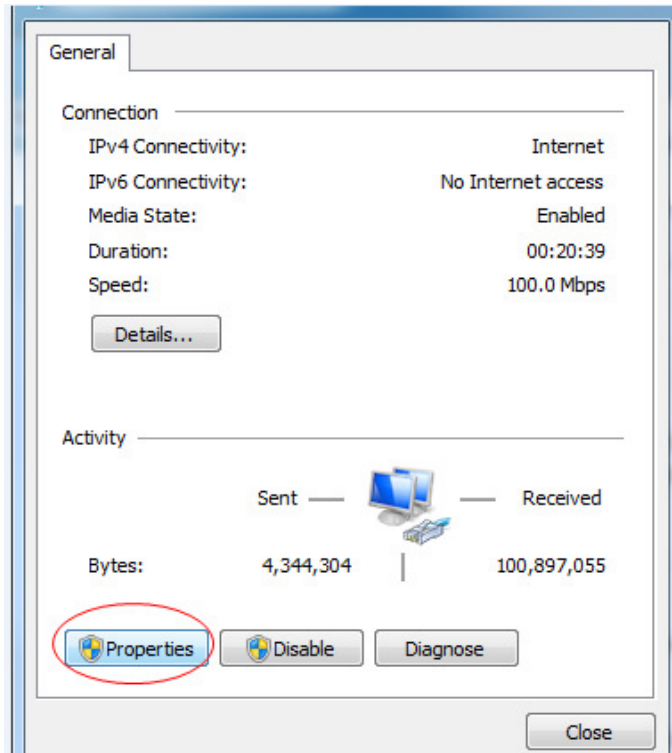


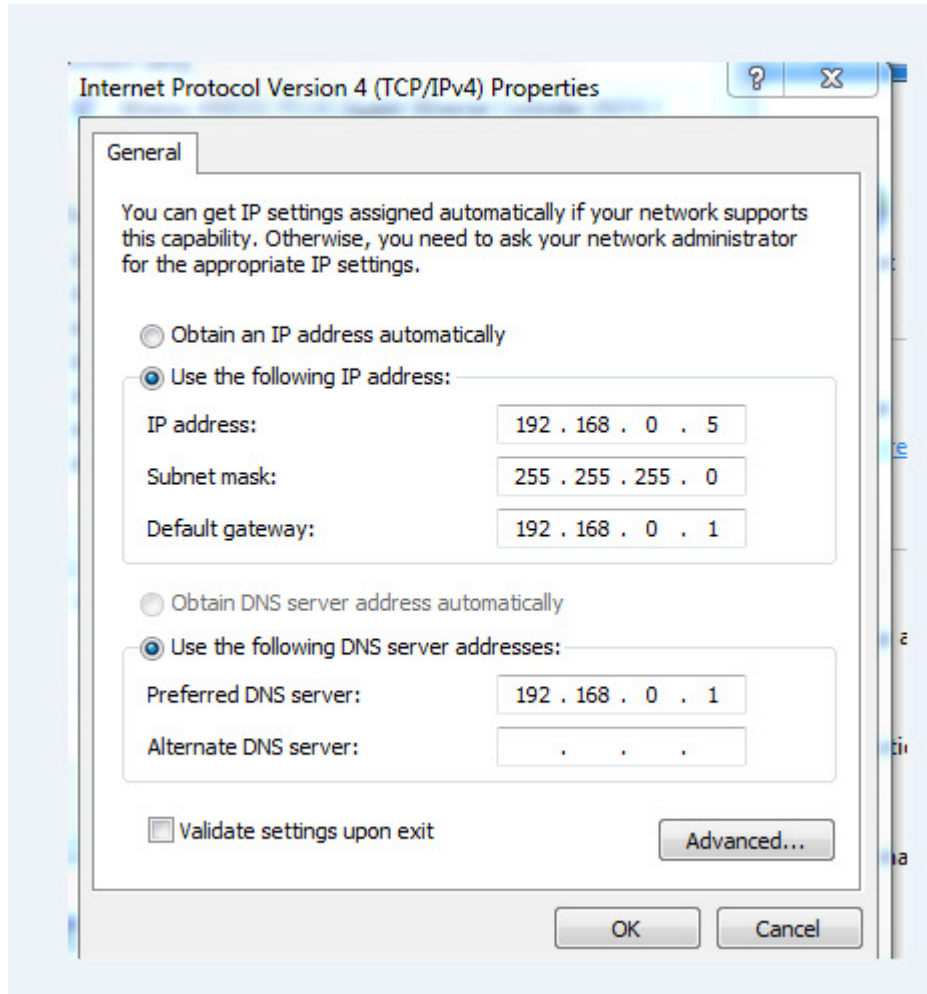
5.2 WEB Management Interface (Web GUI)

The user can use a web browser to check the working conditions and basic parameters of the amplifier. The amplifier supports IE, Chrome, Firefox, Opera and other web browsers. The following examples are based on Opera browser.

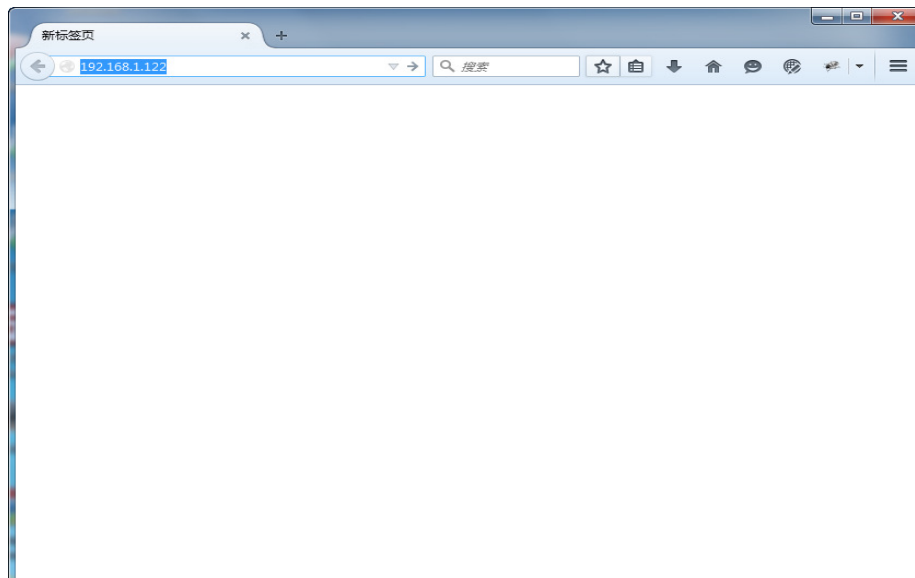
1. Find the IP add in the machine, normally it is 192.168.0.22, set the IP address of the PC in the same range as the following images:



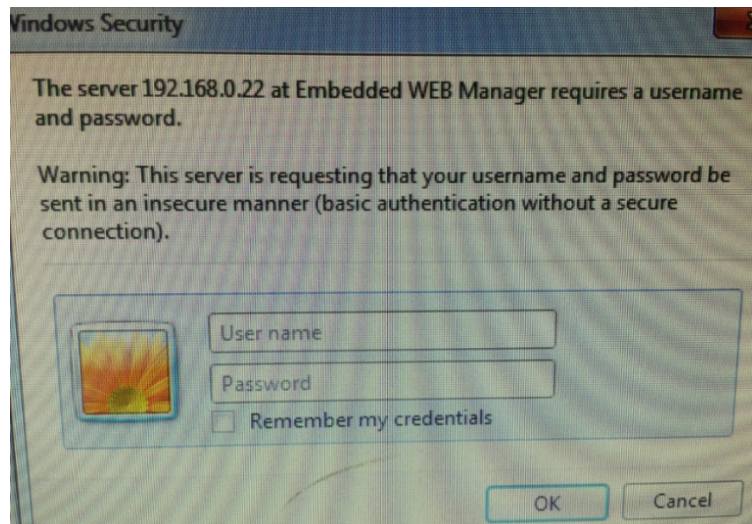




2. Open web browser, input the IP address, For example: 192.168.0.22



Log in to the page.



Default user name and password:

User name: admin

Password: ascent

(Password is **123456** after factory reset)

3. Working condition version:

ASCENT Communication Technology AT5000 EDFA WEB Manager

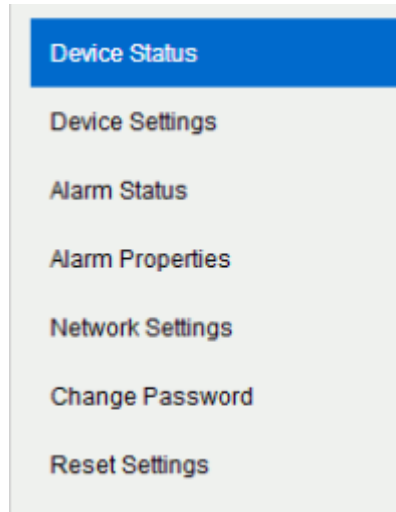
Device Status

Device Model: AT-50-EDFA-20-16-5C
Serial Number: 180205123456
Internal Temperature: 44.1 °C
Input Power: 6.7 dBm
Total Output Power: 34.0 dBm
Single Output Power: 20.0 dBm
DC Power +5V: 5.3 V
Power Supply 1: Fault
Power Supply 2: Normal
FAN1 Status: Normal
FAN2 Status: Normal
FAN3 Status: Normal

Pump	BIAS	TEMP	TEC
1	350 mA	24.4 °C	0.29 A
2	6560 mA	25.0 °C	0.09 A

Copyright © 2011-2017 Ascent Communication Technology Limited

4. Items guide on the left, click to enter:



ASCENT Communication Technology **AT5000 EDFA WEB Manager**

Device Status

Device Model: AT-50-EDFA-20-18-SC
 Serial Number: 180205123456
 Internal Temperature: 44.1 °C
 Input Power: 6.7 dBm
 Total Output Power: 34.0 dBm
 Single Output Power: 20.0 dBm
 DC Power +5V: 5.3 V
 Power Supply 1: Fault
 Power Supply 2: Normal
 FAN1 Status: Normal
 FAN2 Status: Normal
 FAN3 Status: Normal

Pump	BIAS	TEMP	TEC
1	350 mA	24.4 °C	0.29 A
2	6560 mA	25.0 °C	0.00 A

Copyright © 2011-2017 Ascent Communication Technology Limited

ASCENT Communication Technology AT5000 EDFA WEB Manager

Device Settings

PUMP Status: PUMP ON

Set Output ATT: 0.0 dB

Submit

Copyright © 2011-2017 Ascent Communication Technology Limited

ASCENT Communication Technology AT5000 EDFA WEB Manager

Alarm Status

Index	Parameter Name	Alarm Status
1	Output optical power	Nominal
2	Input optical power	Nominal
3	FAN1	Nominal
4	FAN2	Nominal
5	FAN3	Nominal
6	Power Supply 1	DiscreetMajor
7	Power Supply 2	Nominal
8	Internal Temp	Nominal
9	Pump1 BIAS	Nominal
10	Pump2 BIAS	Nominal
11	Pump1 TEC	Nominal
12	Pump1 Temp	Nominal
13	DC +5V	Nominal

Copyright © 2011-2017 Ascent Communication Technology Limited

AT5000 Erbium-Doped Fiber Amplifier

ASCENT Communication Technology **AT5000 EDFA WEB Manager**

Device Status
Device Settings
Alarm Status
Alarm Properties
Network Settings
Change Password
Reset Settings

Alarm Properties

Index	Parameter Name	HHH	HI	LO	LOLO	Deadband	Action
1	Output optical power (dBm)	27.0	26.0	11.0	10.0	0.5	Set
2	Input optical power (dBm)	10.0	8.0	-6.0	-10.0	0.2	Set
3	Internal Temp (°C)	85	70	5	0	2	Set
4	Pump1 BIAS (mA)	900	800	100	80	20	Set
5	Pump2 BIAS (mA)	15000	10000	100	80	20	Set
6	Pump1 TEC (A)	2.00	1.50	-1.50	-2.00	0.10	Set
7	Pump1 Temp (°C)	35.0	30.0	20.0	15.0	1.0	Set
8	DC +5V (V)	6.5	6.0	4.0	3.5	0.2	Set

Index	Parameter Name	Control	Action
1	FAN1	EnableMajor	Set
2	FAN2	EnableMajor	Set
3	FAN3	EnableMajor	Set
4	Power Supply 1	EnableMajor	Set
5	Power Supply 2	EnableMajor	Set

Copyright © 2011-2017 Ascent Communication Technology Limited

ASCENT Communication Technology **AT5000 EDFA WEB Manager**

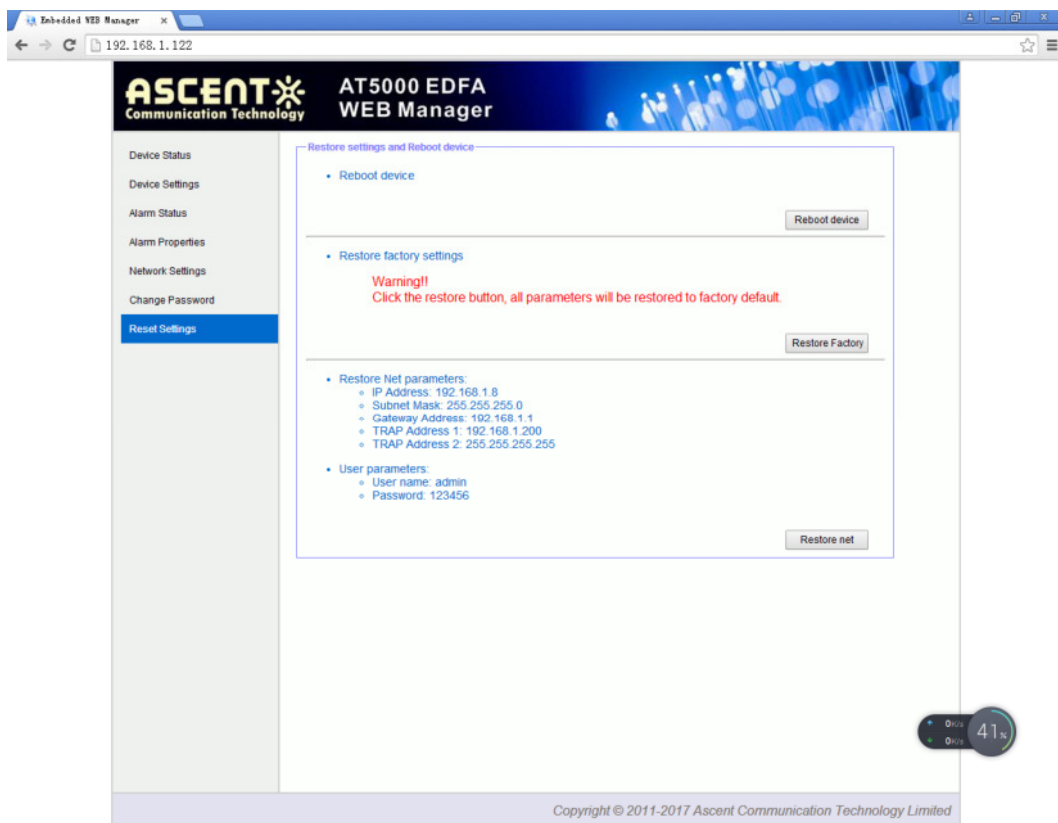
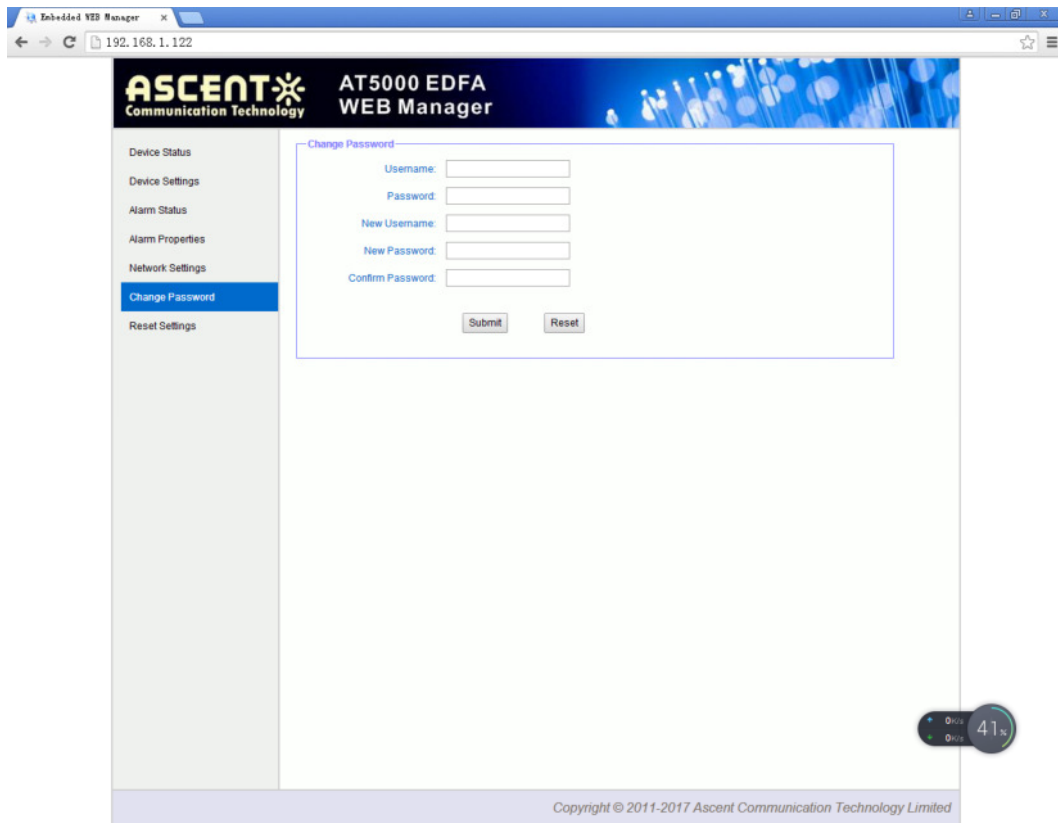
Device Status
Device Settings
Alarm Status
Alarm Properties
Network Settings
Change Password
Reset Settings

Network Settings

Device MAC: 00 : B9 : A0 : 12 : 4E : 1C
 Update Identifier: OA138TG11
 Agent Version: V1.0.0
 Static IP Address: 192 . 168 . 1 . 122
 Subnet Mask: 255 . 255 . 255 . 0
 Default Gateway: 192 . 168 . 0 . 1
 Trap Address 1: 192 . 168 . 1 . 200
 Trap Address 2: 255 . 255 . 255 . 255
 Trap Address 3: 0 . 0 . 0 . 0
 Trap Address 4: 0 . 0 . 0 . 0
 Trap Address 5: 0 . 0 . 0 . 0
 Trap Address 6: 0 . 0 . 0 . 0
 Trap Address 7: 0 . 0 . 0 . 0
 Trap Address 8: 0 . 0 . 0 . 0
 Read Community: public
 Write Community: public
 Trap Community: public
 SNMP Version: V1

Save

Copyright © 2011-2017 Ascent Communication Technology Limited



6 Troubleshooting

6.1 Fiber Optic Maintenance

Any time the fiber leads to the amplifier are disconnected, there is the potential for contamination of the ends of the fiber connectors. Dirt or other contaminants on these components can reduce the amplifier's performance and can result in permanent damage to the device. It is recommended that the fiber connectors be cleaned prior to connection, or reconnection, to the system.

6.2 Troubleshooting Conditions

<i>No lights ON</i>	Is the power on? Is the fuse OK?
<i>Pin fail ON</i>	Is the optical input power too low? Is the input connector dirty?
<i>Pout fail ON</i>	Check the optical output power and pump parameters on the LCD. Contact ACT Technical Support.
<i>Pump alarm ON</i>	Check the pump parameters on the LCD. Contact ACT Technical Support.



GERMANY

Langwiesenweg 64-71
75323 Bad Wildbad, GERMANY
Phone: +49 (0) 7081 / 17 02 0

WEB: www.polytron.de



Ascent Communication Technology Ltd

AUSTRALIA

961 Mountain Highway, Boronia
Victoria 3155, AUSTRALIA
Phone: +61-488 293 682

CHINA

Unit 1907, 600 Luban Road
200023, Shanghai CHINA
Phone: +86-21-60232616

EUROPE

Pfarrer-Bensheimer-Strasse 7a
55129 Mainz, GERMANY
Phone: +49 (0) 6136 926 3246

WEB: www.ascentcomtec.com

HONG KONG SAR

Unit 9, 12th Floor, Wing Tuck Commercial Centre
177 Wing Lok Street, Sheung Wan, HONG KONG
Phone: +852-2851 4722

USA

2710 Thomes Ave, Cheyenne
WY 82001, USA
Phone: +1-203 816 5188

VIETNAM

15 /F TTC Building, Duy Tan Street, Cau Giay Dist.
Hanoi, VIETNAM
Phone: +84 168 481 8348

EMAIL: sales@ascentcomtec.com



Specifications and product availability are subject to change without notice.
Copyright © 2017 Ascent Communication Technology Limited. All rights reserved.
Ver. ACT_1RU_32_Port_EDFA_QRG_V1d_Jan_2017